

Home Page.. www.aurand.net



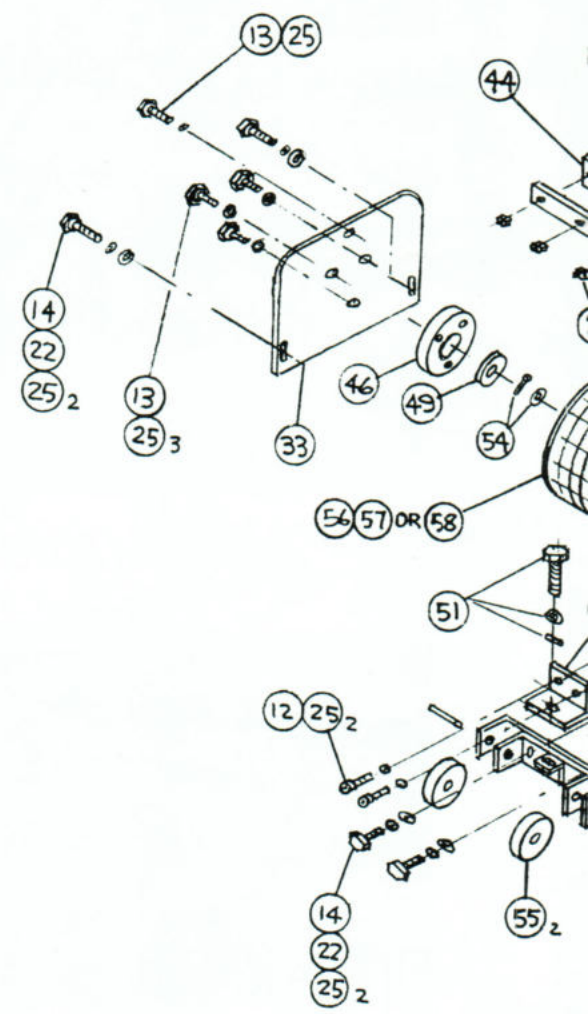
AURAND

MODEL
W1G

Instruction Sheet
and Parts Chart

PARTS BREAKDOWN

REF	PART NO.	USAGE	DESCRIPTION
1	685	2	SCREW
2	1019	1	BRACE (BOTTOM)
3	1020	1	HANDLE (TOP)
4	1025	1	AXLE (MAIN)
5	1026	1	BASE
6	1027	1	GUARD, CUTTER
7	1028V	2	BRG, SPINDLE
8	1035V	1	RING, RET.
9	1036V	2	RING, RET.
10	1037V-38	3	SCREW
11	1038V-310	9	SCREW
12	1039V-46	2	SOC HD SCR
13	1040V-14	5	BOLT
14	1040V-16	13	BOLT
15	1040V-210	2	BOLT
16	1040V-36	2	BOLT
17	1040V-212	4	BOLT
18			
19	1041V-6	9	NUT, HEX
20	1041V-7	6	NUT, HEX
21	1041V-13	12	STOP NUT
22	1042V-5	5	WASHER, FLAT
23	1042V-6	6	WASHER, FLAT
24	1043V-3	2	L'WASHER
25	1043V-5	20	L'WASHER
26	1043V-6	6	L'WASHER
27	1043-7	2	L'WASHER
28	1054	1	GUARD, BELT
29	1058-2	1	BRACE, TOP
30	1059	1	SHAFT
31	1060	1	MOUNT, BRG
32	1064	2	SUPPORT, HANDLE
33	1068	1	COVER (CB HSG)
34	1072	1	RTNR, DUST STRIP
35	1073	1	BRACKET, GUARD
36	1075V	1	PULLEY, SPINDLE
37	1076V	1	ENGINE, GASOLINE
38	1080V	1	PULLEY, ENGINE
39	1081V	2	WHEEL
40	1082	2	KEY
41	1084	2	SPACER, WHEEL
42	1087	2	GRIP, HANDLE
43	1088	1	COVER, VAC PORT
44	1090	1	STRIP, DUST
45	1091V	2	ROLLPIN
46	1142	1	BLOCK, BRG
47	1150V	1	V-BELT
48	1153V	2	RING, RTN.
49	1154V	1	BEARING
50	1188	1	BRACKET
51	1189	1	BOLT, ADJ.
52	1190	1	BRACKET, WHEEL
53	1212	2	PIN, SPRING
54	28M	1	KEY & WSHR
55	85M	2	WHEEL
56	AUR-W1	1	CUTTER BUNDLE
57	AUR-W2B	1	CUTTER BUNDLE
58	AUR-W2S	1	CUTTER BUNDLE





ASSEMBLY AND OPERATING INSTRUCTIONS

1. Fasten HANDLE ASSEMBLY to BASE (Ref 5) with hardware furnished.
2. Prepare ENGINE in accordance with Manufacturer's instruction. RPM should be set between 3300 and 3600 RPM.
3. Operation and motion of equipment is similar to that of operating a lawn mower. Over-lapping the strips of cleaned surface insures a perfect job. Cleaning action is obtained by either moving forward or backward. Operator technique will dictate preference. Never allow the tool to be held in one spot or move from side to side as on a swivel. Equipment should never be operated without eye, hearing and face protection. Never touch or work on the rotating head when power is present.



SURFACE AND MAINTENANCE INSTRUCTION

DEPTH ADJUSTMENT:

When adjustment is required to compensate for cutter wear:

1. Loosen BOLTS (Ref 14) which secure WHEEL BRKT (Ref 52). LOWER HSG (Ref 6) by turning ADJ. BOLT (Ref 51) clockwise. Care must be taken not to adjust too much or the cutters will bottom out on their pins and cause uneven wear and damage to CUTTER BUNDLE and Equipment. A height of 3" from the center of spindle to surface is normal.
2. Tighten BOLTS (Ref 14).

CUTTER BUNDLE REPLACEMENT:

1. Remove COVER (Ref 33) by removing three outer BOLTS (Ref 13 & 14).
2. Remove COTTER PIN & WSHR (Ref 54).
3. Slide CUTTER BUNDLE (Ref 56, 57 or 58) from SPINDLE.
4. Slide new CUTTER BUNDLE on SPINDLE and replace COTTER PIN & WSHR.
5. Replace COVER.

LIMITED WARRANTY

AURAND Equipment is warranted by Aurand Mfg. & Equip. Co. to the original user against defects in workmanship or materials under normal use (rental use excluded) for ninety (90) days after the date of purchase. Any tool becoming inoperable during the warranty period must be returned to AURAND for examination. Any part or parts found to be defective in materials or workmanship or both by AURAND will be repaired or replaced at AURAND's option. All shipping on tools submitted for examination under this warranty must be borne by purchaser.

PURCHASER NOTICE

The following is made in lieu of all warranties express or implied: Seller's and manufacturer's obligation shall be to replace parts found to be defective. Neither seller nor manufacturer shall be liable for injury, loss or damage, direct or consequential arising out of the use or the inability to use the equipment. Before using, user shall determine the suitability of the equipment for his intended use and user assumes all risk and liability in connection with it's use.



1210 Ellis Street
 Cincinnati, Ohio 45223-1843
 (513) 541-7200
 FAX: (513) 541-3065
 TOLL FREE: 800-860-2872



Accepted