

# AURAND



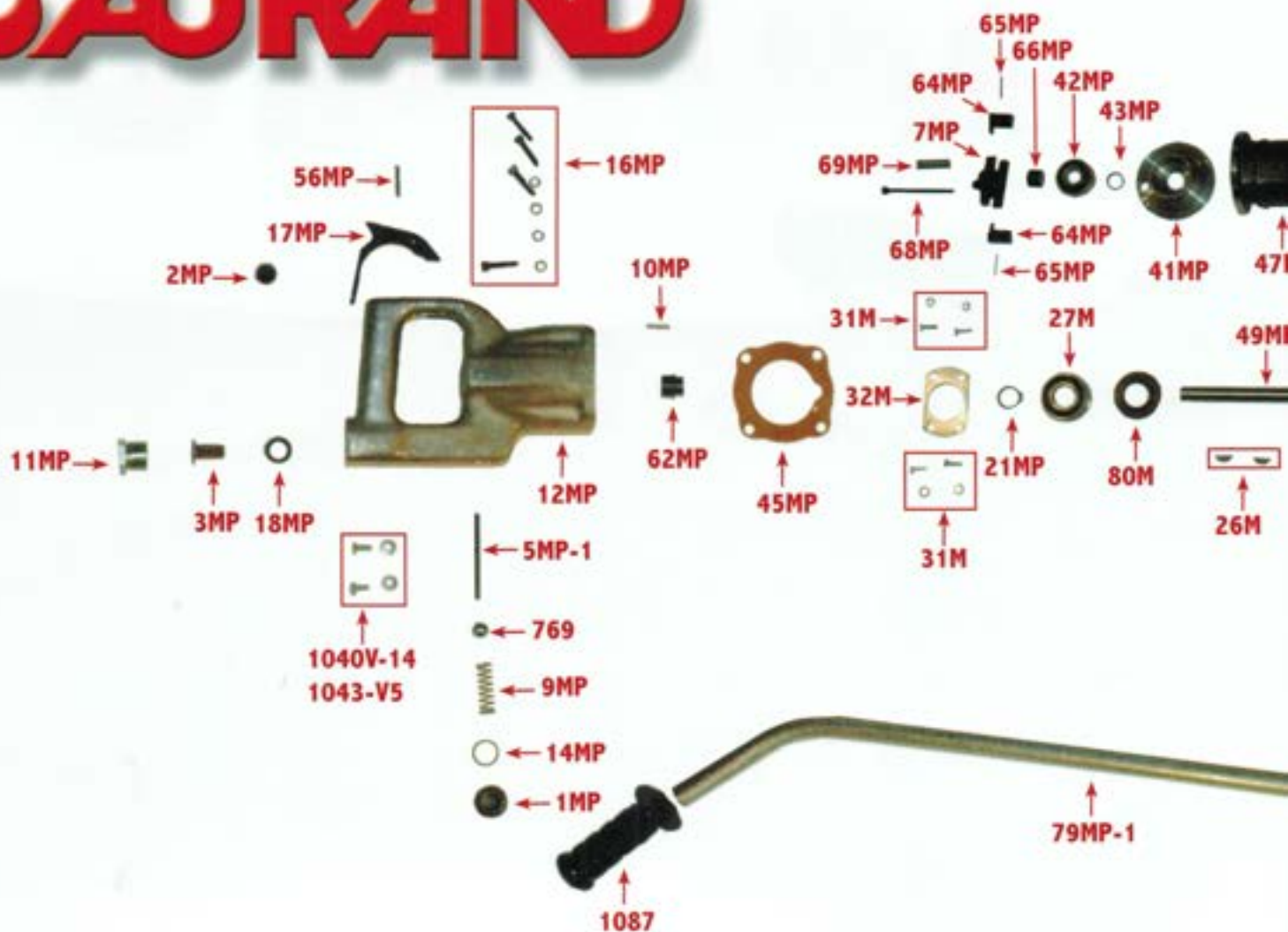
**MP6**

**MP6E**

## **Parts List & Operating Instructions**

**Aurand has manufactured exclusively in the USA since 1937.**

# AURAND



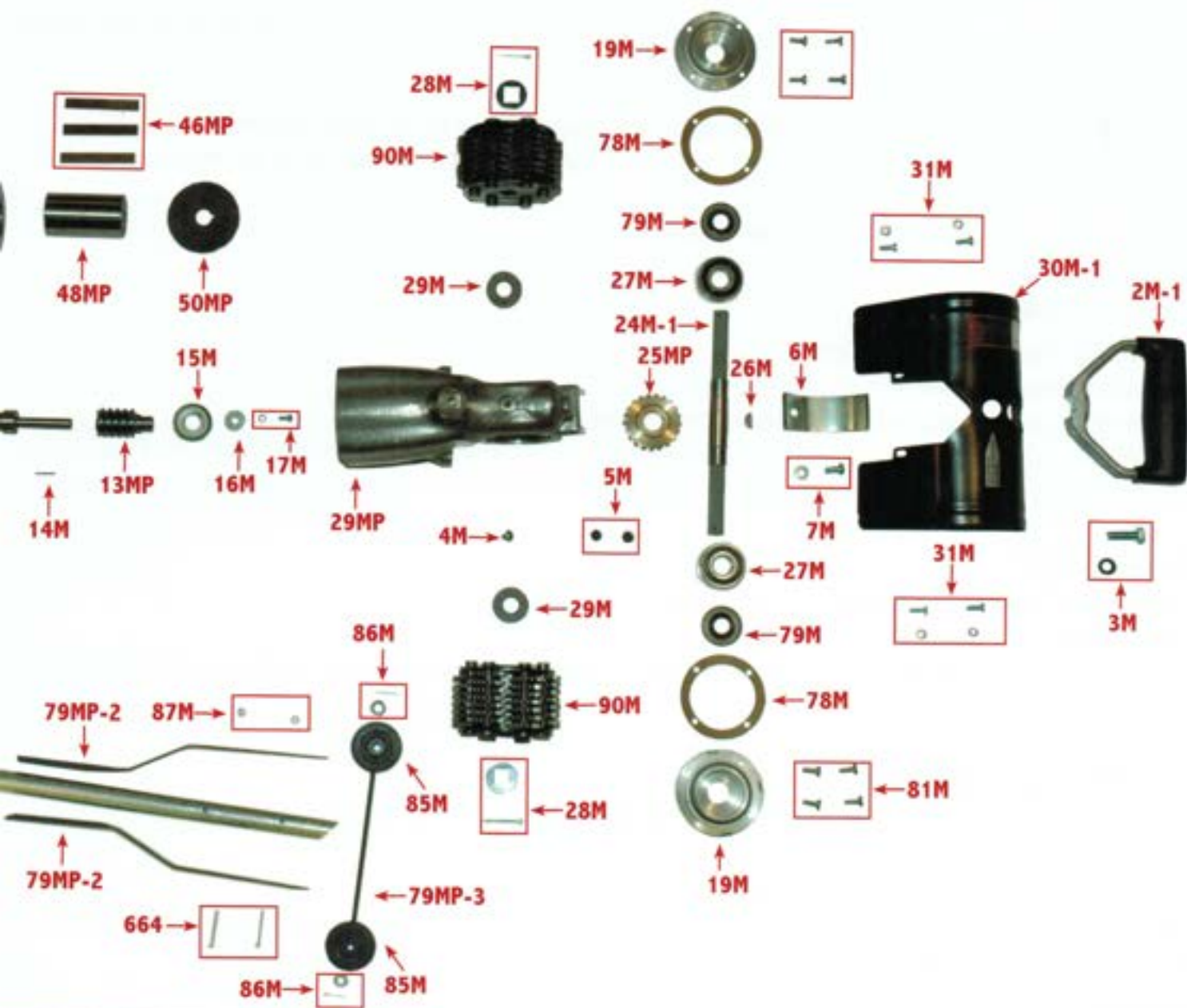
## PART NUMBERS

664 Screw  
 769 Ball Valve  
 1087 Handle Grip  
 1040V-14 Screw  
 1043V-5 L' Washer  
 2M-1 Spade Handle  
 3M Handle Screw & washer  
 4M Oil Screw  
 5M Plug  
 6M Depth Shoe  
 7M Shoe Screw  
 14M Worm Key

15M Ball Bearing-Worm  
 16M Washer, Worm Shaft  
 17M Screw, Worm Shaft  
 90M Cutter Bundle  
 90ME Cutter Bundle (Not Shown)  
 24M-1 Spindle  
 24ME-1 Spindle (Not Shown)  
 26M Worm Wheel Key  
 27M Ball Bearing  
 28M Washer & Key  
 29M Cutter Bundle Felt  
 30M-1 Guard

30ME-1 Guard (Not Shown)  
 31M Guard Screw & Washer  
 32M Housing & Bering Plate  
 33M Screw & Washer  
 76M Cotter Pin  
 78M Side Gasket Plate  
 79M Shaft Seal  
 80M Rear Bearing Gasket  
 81M Side PLate Seal Screw  
 85M Wheel  
 86M Washer  
 87M Stop Nut





1MP Valve Plug  
 2MP Taper Plug  
 3MP Screen  
 5MP Valve Rod  
 7MP Hub  
 9MP Valve Spring  
 10MP Dowel Pin  
 11MP Adapter  
 12MP Handle  
 13MP Worm  
 14MP Gasket  
 16MP Screw, Handle

17MP Trigger  
 18MP Gasket  
 21MP Bearing Retainer  
 25MP Worm Wheel  
 29MP Motor Housing  
 41MP Rear Plate  
 42MP Ball Bearing  
 43MP Spacer Washer  
 45MP Gasket  
 46MP Rotor Blade  
 47MP Cylinder  
 48MP Rotor  
 49MP Shaft

50MP Front Plate  
 56MP Trigger Pin  
 62MP Jet  
 64MP Weight  
 65MP Pin  
 66MP Plunger Head  
 68MP Plunger Stem  
 69MP Spring  
 70MP Rotor Key  
 79MP-1 Handle  
 79MP-2 Handle Support  
 79MP-3 Axle  
 1245 Oil (8 oz. Tube)

## BEFORE OPERATING:

The Aurand MP Pneumatic Tool has been thoroughly tested and shipped complete, but **DO NOT** attempt to operate without reading the following instructions.

1. The air line must have automatic filtering and lubrication. The compressed air to the motor must be free of moisture and dirt or damage will occur. The equipment must be capable of handling at least 42 cu. ft. of air per minute at 90 lbs. air pressure.
2. Connect to air line, using a minimum 3/8" inside diameter hose.

## OPERATING INSTRUCTIONS:

1. Wear safety glasses and hearing protection.
2. Grasp both handles and raise front of tool from surface.
3. Squeeze trigger and allow cutters to come up to speed before applying to surface.
4. Using both hands, guide tool in a forward and backward motion to assure complete coverage. Let weight of tool do the work. Never apply pressure as this will slow down motor speed and cause damage to motor, gears, and cutter bundles.

## DEPTH ADJUSTMENT:

When adjustment is required to compensate for cutter wear:

1. Loosen SCREW (7M)
2. Move DEPTH SHOE (6M) up or down as required. (Cutters should have play in them when touching work surface)
3. Tighten SCREW (7M)

## CUTTER BUNDLE REPLACEMENT:

1. Install COTTER PIN & WASHER (28M) on both ends of SPINDLE (24M-1 or 24ME-1). Cutter tips must point in direction of rotation.
2. Slide CUTTER BUNDLE (90M) and CUTTER BUNDLE FELT (29M) from SPINDLE.
3. Slide new CUTTER BUNDLE FELT & CUTTER BUNDLES on SPINDLE. CUTTER TIPS must point in direction of rotation.
4. Install COTTER PINS & WASHER on both ends of SPINDLE.

## LUBRICATION:

Check oil (1245) in Gear Housing after every 8 hours of operation. Remove Screw (4M). With tool sitting level add 1245 Oil through hole. Then replace SCREW & PLUG.



## Aurand Manufacturing & Equipment Company

1210 Ellis St  
Cincinnati OH 45223-1843

aurand@fuse.net  
800-860-2872 or 513-541-7200  
Fax 513-541-3065

[www.aurand.net](http://www.aurand.net)

# AURAND

We gladly accept:

